

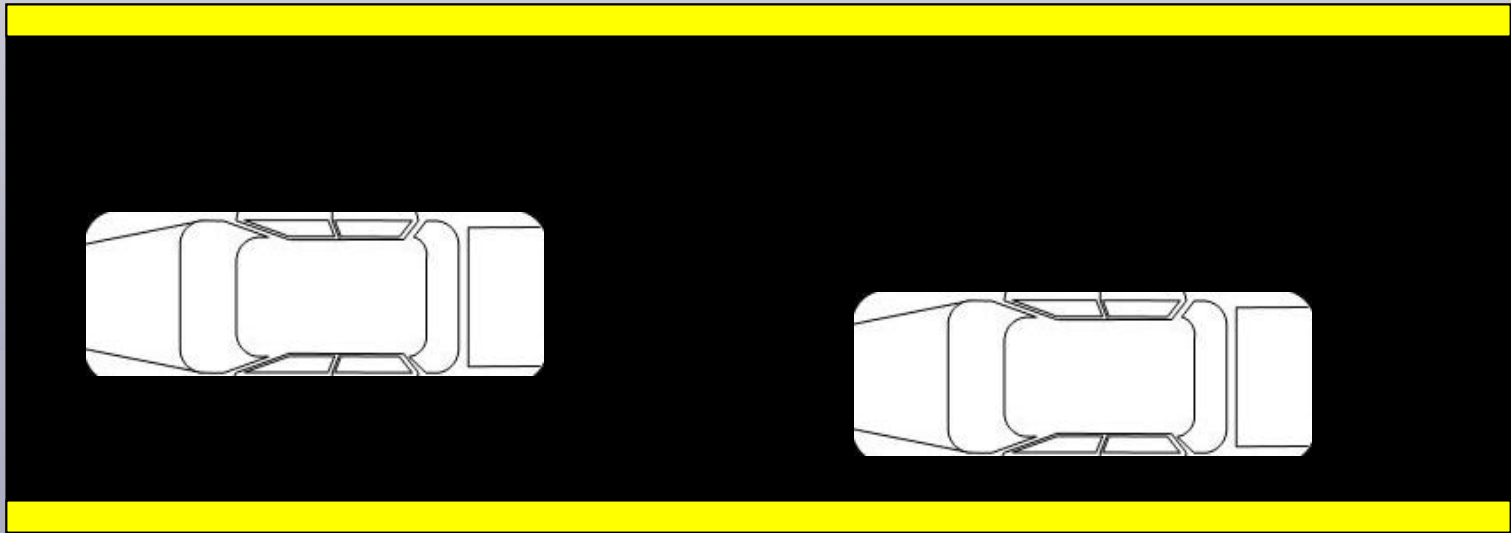
# Safe and Effective Traffic Stops



***Zero Officers Killed or Injured***

# Traffic Stops

- **In-Line Vehicle Positioning**





# Traffic Stops

- **In-Line Vehicle Positioning with Left-Side Approach**
  - 43% Hits
  - Average Impact Speed 7-31mph
  - Mortality Range 0-36.4%

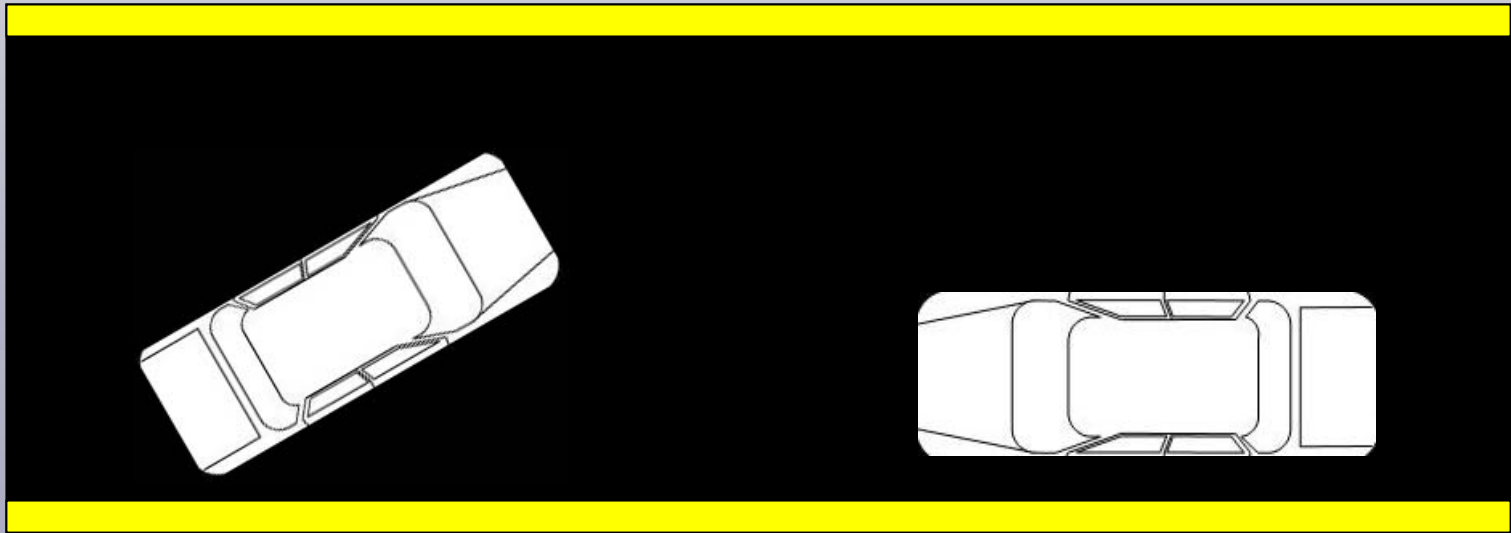


# Traffic Stops

- **In-Line Vehicle Positioning with Right-Side Approach**
  - **73% hits**
  - **Average Impact Speed 7-14mph**
  - **Mortality Range 0-9.5%**

# Traffic Stops

- **Angled Vehicle Positioning**





# Traffic Stops

- **Angled Vehicle Positioning and Right Side Approach**
  - **24% hits**
  - **Average Impact Speed 5-14 mph**
  - **Mortality Range 0-6.2%**



# Traffic Stops

- **Multi-level training approach to vehicle positioning**
  - “One configuration fits all”
  - Foundation training reinforced at the next level by the Field Training Officer
  - Supervisor monitoring and guidance
  - In-service training on alternative approaches
  - Additional in-service training to reinforce tactics



# Traffic Stops

## **Benefits to a Passenger Side Approach**

- **Removes officer from traffic lane**
- **Element of surprise**
- **Increased visibility into passenger compartment**
- **Increased cover available**





# Traffic Stops

## **New Warning System Utilized by Florida Highway Patrol**

- New LED lightbar with 4 color options
- Amber traffic direction system in back window
- Different light patterns when vehicle is stopped and when it is in motion
- Improved take-down light
- Supplemental Siren

# Traffic Stops



- **Move Over Laws:** Require motorists to move over or slow down as they approach a stationary police or emergency vehicle with flashing lights

- 41 states currently have move over laws
- To improve roadside safety through increased compliance with move-over laws, agencies must:

- Increase driver awareness of move over laws
- Increase general move-over enforcement





# Traffic Stops

## ■ Lifesaving suggestions

- Return to the offset method rather than the more recent angled position
- Secure items in the trunk laterally and ensure that sharp objects and explosive items are not carried.
- Minimize the amount of time an officer spends sitting in the cruiser on a traffic stop
- Consider passenger side approaches whenever possible
- Opt for rear lighting that is less dazzling to avoid the “hypnotic effect” on passing motorists.
- Use more amber lighting and directional arrows
- Utilize retro-reflective markings to better outline the shape of the cruiser